

Aid to Children, Youth and Families





International Federation
of Red Cross and Red Crescent Societies

The Principles of the Red Cross and Red Crescent

Humanity

International Red Cross and Red Crescent Movement, born of a desire to bring assistance without discrimination to the wounded on the battlefield, endeavours, in its international and national capacity, to prevent and alleviate human suffering wherever it may be found. Its purpose is to protect life and health and to ensure respect for the human being. It promotes mutual understanding, friendship, cooperation and lasting peace amongst all peoples.

Impartiality

It makes no discrimination as to nationality, race, religious beliefs, class or political opinions. It endeavours to relieve the suffering of individuals, being guided solely by their needs, and to give priority to the most urgent cases of distress.

Neutrality

In order to continue to enjoy the confidence of all, the Movement may not take sides in hostilities or engage at any time in controversies of a political, racial, religious or ideological nature.

Independence

The Movement is independent. The National Societies, while auxiliaries in the humanitarian services of their governments and subject to the laws of their respective countries, must always maintain their autonomy so that they may be able at all times to act in accordance with the principles of the Movement.

Voluntary service

The International Red Cross and Red Crescent Movement is a voluntary relief movement not prompted in any manner by desire for gain.

Unity

There can be only one Red Cross or one Red Crescent Society in any one country. It must be open to all. It must carry on its humanitarian work throughout its territory.

Universality

The International Red Cross and Red Crescent Movement, in which all Societies have equal status and share equal responsibilities and duties in helping each other, is worldwide.

German Red Cross (GRC)

National Headquarters

Team Aid to Children, Youth and Families

With joined efforts into the future!

**Conceptual framework of the GRC Aid to Children,
Youth and Families**

Abbreviated version

Contents

1	Aid to Children, Youth and Families in the GRC	6
2	Aid to Children, Youth and Families as a Statutory Activity of the GRC	8
3	The Profile of the GRC Aid to Children, Youth and Families	10
	Pregnancy- and Family-Counselling	10
	Family Education	10
	Socio-Educational Services	11
	Child Day Care Centres	11
	Open Child and Youth Work	12
	Youth Social Work	12
	Debtor and Insolvency Counselling	12
	Voluntary Services	13
	Cooperation within the GRC	13
	Profile and Value Orientation	14
4	The GRC Aid to Children, Youth and Families Responds to the Challenges of the Future	15
	Holistic Education for Everybody	15
	Promotion of Health	17
	Acknowledging Diversity and Common Values	18
	Family Promotion, Strengthening and Support	19
	Prevention of Poverty and Exclusion – Promotion of Voluntary Engagement	20
	Ensuring and Developing Quality in the Aid to Children, Youth and Families	22
5	Outlook: With Joined Efforts into the Future	24
	Imprint	26

Foreword

Dear readers,

"No human being shall be lost" – this is especially important when it comes to children and the young. In order to prevent this, the support of children, youth and the family has become one of the priorities of the GRC.

The GRC promotes the development of children, young people and young adults and helps abolishing discrimination. The GRC stands for the enforcing of the rights of all children to protection, promotion and participation. Furthermore, the GRC advocates suitable living conditions for families and supports them, especially in crisis situations.

The GRC communicates its ideals and values by practising humanity. If children and young people learn at an early age how people of different origin, language and religious background, people with and without disabilities can work together and help each other, they will pass on the ideals of the GRC.

The new conceptual framework of the GRC Aid to Children, Youth and Families is meant to be an impulse to pursue the goals of the GRC within its work for and with children, young people, young adults and families. This abbreviated version comprises the most important statements of the conceptual framework.

To all those who participate in the GRC Aid to Children, Youth and Families an enormous thank-you. I would like to encourage you to continue engaging actively by further promoting the work for children, young people and young adults based on the new conceptual framework.



Donata Freifrau Schenck zu Schweinsberg, GRC Vice-President



Aid to Children, Youth and Families in the GRC

This brochure is based on the conceptual framework "With joined efforts into the future" referring to the efforts accomplished and adopted in 2009 by the Federal Association and the regional branches of the GRC.

The brochure provides insight into the various offers and target groups of the GRC Aid to Children, Youth and Families and defines future challenges expected to arise from the further development of services, facilities and help tailored in accordance with particular goals and needs.

The GRC Aid to Children, Youth and Families is implemented as well by salaried staff providing aid to children, youth and families as well by the official youth organisation of the GRC, the German Red Cross Youth (RCY) relying on a

broad voluntary basis. With different task focuses, structures, accesses and work forms, both parts of the association contribute to the statutory goals of the GRC. The Aid to Children, Youth and Families makes use of any opportunity to cooperate with the RCY, especially when supporting the rights and interests of children, young people and young adults in society and on a political level. The GRC actively promotes the dignity and rights of children and young people in accordance with the United Nations Convention on the Rights of the Child to protection, promotion and participation, draws the attention to the violations of these rights and determines the causes and those who are to be held responsible for the violation.



The services offered by the GRC Aid to Children, Youth and Families are available to all people. In accordance with the promoted image of the association, the mission of the GRC Aid to Children, Youth and Families is to secure equal opportunities to all children, young people, young adults and families, without discrimination as to gender, origin or religion, to support the holistic and comprehensive development of talents, competences and resources discovered among children, young people, young adults and families and to promote voluntary engagement.

The GRC Aid to Children, Youth and Families is particularly devoted to helping, vulnerable, disadvantaged and burdened people as well as those, who have had little access to public education and care so far.

The title of the conceptual framework "with joined efforts into the future" suggests the following: in order to be efficient, the GRC Aid to Children, Youth and Families cooperates closely with all components of the GRC, especially in the area of social welfare and with the Red Cross Youth (RCY) activities. It furthers networks with external partners, such as schools, health institutions and other institutions, organisations and representatives from among political and social players.

The GRC is a voluntary welfare organisation, merged on the level of the federal state, and as such authorised to provide youth welfare services in accordance with the Eighth Book of Social Law (8th Book of Social Law, SGB VIII, §75).



Our mutual experiences and joined exploitation of human and material resources ensure the strength of our performance. (Taken from the GRC guiding principles)

2

Aid to Children, Youth and Families as a Statutory Activity of the GRC

The German Red Cross is part of the International Red Cross and Red Crescent Movement and has adopted its seven basis principles: humanity, impartiality, neutrality, independence, voluntary service, unity and universality. These seven principles are binding for all associations, organisations and institutions of the GRC.

The GRC is a National Red Cross Organisation in the sense of the Geneva Red Cross Convention and helps victims of conflict and disaster as well as other vulnerable people affected by a health or social emergency situation.

As a recognised umbrella organisation within the voluntary welfare sector, the GRC embraces the interests of those people, "who need



help and support with the aim to abolish social discrimination, distress and inhumane situations as well to influence the improvement of living conditions for individuals, families and the general public"¹.

The Aid to Children, Youth and Families of the GRC implements the tasks defined by the statute of the GRC. Namely, they are...

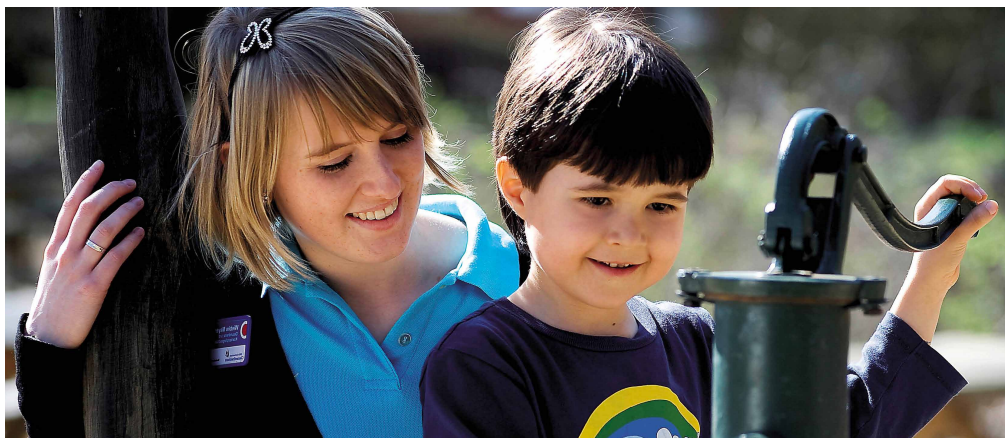
- the prevention and the alleviation of human suffering resulting from diseases, injuries, disabilities or discrimination;
- the promotion of health, welfare and education;
- the promotion of work with children and young people;

- the dissemination of knowledge regarding humanitarian law and the basic principles and ideals of the International Red Cross and Red Crescent Movement.



As a recognised umbrella organisation within the voluntary welfare sector, the GRC embraces the interests of those people, who need help and support with the aim to abolish discrimination, distress and inhumane situations.

¹ GRC Statute: http://www.drk.de/fileadmin/Ueber_uns/DRK-Bundessatzung_2009.pdf



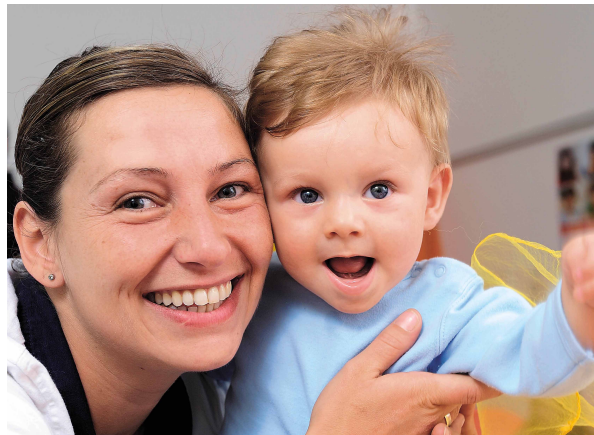
3

The Profile of the GRC Aid to Children, Youth and Families

The GRC is active in many areas of aid to children, youth and families and maintains the following components and services:

Pregnancy- and Family-Counselling

The psychosocial advisory services, which are offered by the pregnancy counselling centers, focus on



men and women who need support concerning sexual education, contraception and family planning. The counselling centres emphasise primary and secondary prevention within the framework of early intervention. Thus they contribute tremendously to networking and cooperating in the area of health-care and youth welfare. Family counselling centres support and assist families in urgent crisis situations and strengthen parental competence.

Family Education

Based on the Law of Children and Youth Welfare Services, Family Education promotes the child raising competences of parents, such as confident child care or nonviolent parenting. The Family Education thus improves family and social

relationships, assists parents and promotes health within the family. The services of the Family Education are focused mainly on parents-to-be and families with infants and small children. The GRC trains babysitters and recommends them to families with the aim to assist parents.

Throughout the entire country, the GRC offers services, such as "Parents expecting their first Child", "ElBa@-parents and babies during the first year of their life", "SpieKo® - Play and contact groups for children between 1 and 3" as well as "Fit for babysitting". These Services are included in a range of activities practised across generations and different target groups, such as immigrant families, fathers and grandfathers or disadvantaged people of any kind. These activities pose different topical focuses including the improvement of household and financial competences, healthy handling of stress and the proficient support of the educational career of children.

Socio-Educational Services

The ambulant help in child-raising include among other things parenting consultants, social group



work, parenting assistance, care assistants, socio-pedagogical family assistance and child-raising in day care groups. Parents, children and young people are being counselled, stabilised in crisis situations and assisted in further developing their own parenting or social competences. In in GRC facilities like children's home or in another kind of caretaking Institutions skilled professionals provide children and young people with an all-day support in accordance with their individual needs.

Child Day Care Centres

The GRC provides boys and girls in day care facilities with holistic raising, education and care. The fa-



The GRC provides boys and girls in day care facilities with integrated raising, education and care.



ilities include cribs, kindergartens, daycares, parent, children and family centres as well as after school care centres for schoolchildren. The services are focused on Children between 0 to 14 years of age.

Open Child and Youth Work

In the GRC facilities for open youth work children and young people can decide on how they are going to organise their spare time and choose education offers furthering their personal and social development as well as encouraging them for social participation.

Youth Social Work

The GRC conducts its various operational activities through facilities and projects within the youth social work, such as in the area of school social work, transition management or support in the youth labour market. Youth social work services endeavour to strengthen the personality of disadvantaged children and young people motivating them to participate in the society and in voluntary engagement. Youth social work at school opens doors to new experiences and enable social learning processes. They prevent school dropouts, ensure success at school and assist the transition to vocational education and profession.

Debtor and Insolvency Counselling

The debtor and insolvency counselling is an essential element of the aid offered to people with economic difficulties. The skilled professionals of the officially recognised GRC counselling centres work with adults and young people who need advice regarding stabilising their social, mental and economic situation. Together with the affected individuals a debt regulation

plan is created, which contains the necessary steps towards a potential debt reduction. Apart from the particular case work, the debtor counselling centres offer preventive work and give valuable contributions to the prevention of poverty among children and young people.

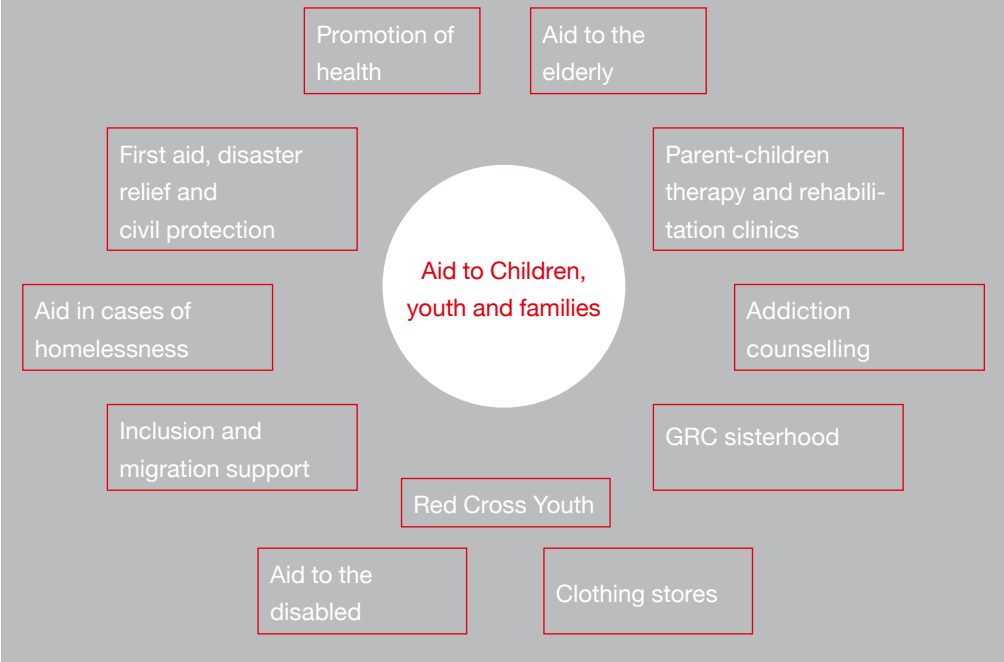
Voluntary Services

The GRC is one of the largest providers of voluntary services to young

people in Germany. Within the framework of the Voluntary Social Year (Freiwilliges Soziales Jahr, FSJ) the Federal Voluntary Service, the European Voluntary Service (EVS) and the development volunteers' service "weltwärts" (world bound) the GRC encourages young men and women to participate in social services. These services may be offered both in Europe and outside of Europe.

Cooperation within the GRC

The GRC Aid to Children, Youth and Families cooperates with other components in the GRC.



Profile and Value Orientation

The profile and the value orientation of the GRC Aid to Children, Youth and Families are a result of the implementation of the basic principles of the Red Cross and the Red Crescent Movement. The GRC Aid to Children, Youth and Families...

- focuses on providing respect of human dignity solely on the basis of being a human-being.
- furthers mutual understanding, friendship and the peaceful sharing of living conditions among people from different cultural backgrounds.
- protects life and health by supporting and promoting the mental and physical integrity as well as the well-being of children, young people, young adults and families.
- is committed to provide services based on the principle of impartiality of the Red Cross, without discrimination as to nationality, origin, religion, social position or political belief of the target groups.
- is active within the federal framework of subsidiary social welfare principles in Germany, based on own decisions and without commissioning or profit orientation.
- with its activities, grants a high position to the orientation of common welfare provided by voluntary engagement.
- based on the principle of neutrality, does not interfere in the discussions of political parties but does assume a certain position in its function as the advocate of children, young people, young adults and families regarding particular political issues related to them.
- cooperates with authorities and other institutions. In these attempts, the GRC Aid to Children, Youth and Families reserves its right to act in accordance with the basic principles of the Red Cross and the Red Crescent at all times.
- is embedded in the whole organisation of the GRC including the aid organisation, the Youth Organisation and their special resources.
- is part of the International Red Cross and Red Crescent Movement, and may cooperate with other Red Cross and Red Crescent societies in nearly every country in the world.
- meets a high degree of recognition within its target groups and enjoys a high level of trust.

4

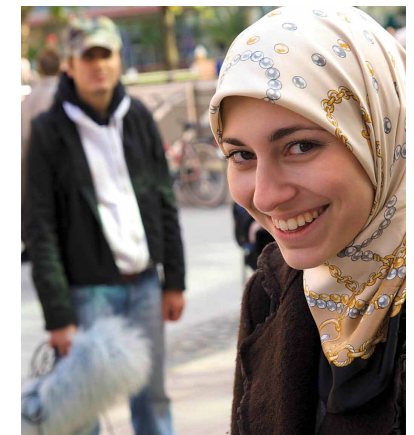
The GRC Aid to Children, Youth and Families Responds to the Challenges of the Future

Holistic Education for Everybody

Considering the complex living conditions and modernising processes in society, high expectations are imposed on child raising, education and socialisation. Holistic education is the central resource of the development of society.

In Germany, the social background determines the success of education to a very high degree. People living in poverty and those with a history of immigration are partly excluded from holistic education opportunities.

In its facilities and projects the Aid to Children, Youth and Families offers a wide range of possibilities for non-formal and informal learning.





The GRC Aid to Children, Youth and Families assists Children, young people, young adults and families acquiring competences and provides the possibility for voluntary social engagement in all its facilities.

Personal, social and democratic competences are particularly promoted. The experience of self-efficiency and social recognition strengthens the feeling of self-worthiness and enables participation.

Considering the expansion of all-day schools and the shaping of educational landscapes in the communities, the cooperation between public and voluntary child and youth welfare, schools and other education institutions is being intensified.

■ The GRC promotes a generally accessible education system in order to guarantee the development and evolving of talents, competences and skills of all children, young people, young adults and families and to promote them individually.

■ The GRC endorses the idea of offering a wide range of high ranking possibilities for vocational education for all young people.

■ The GRC Aid to Children, Youth and Families develops its education concepts further and is particularly focused on the education of personality in the sense of guided, self-directed social and individual learning.

■ The GRC Aid to Children, Youth and Families assists children, young people, young adults and families acquiring competences and offers the possibility for voluntary social engagement in all its facilities.

■ The GRC participates in the expansion of kindergartens and day care facilities for children, especially for children up to three years old. The GRC develops its services in the area

Promotion of Health

of day care facilities for children by furthering quality and is particularly focused on providing inclusive raising, education and caretaking of children with and without disabilities as well as children of different social and cultural backgrounds.

■ The GRC develops its day care facilities into centres for generations and families to meet and assist each other.

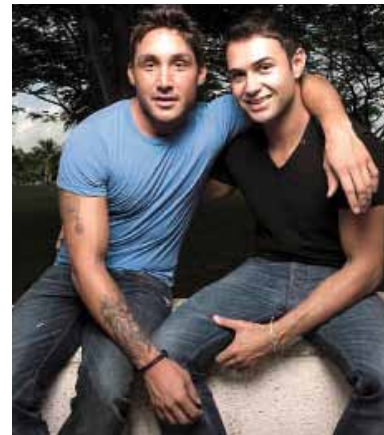
■ The GRC strengthens the cooperation with (all-day) schools at the elementary and the secondary level and other education partners, such as culture, sports or businesses. The GRC introduces its methodical and professional competences within the component of aid to children and youth in a rather active way.

Health promotion is aimed at preserving health and not only preventing illness. A positive relationship with other people, a strong sense of self-determination and mindfulness of the own body contribute to the preservation of personal health. In order to maintain their health, the awareness and the knowledge of health preservation among children, young people, young adults and families have to be strengthened.

It is particularly important for the family to participate if a comprehensive health promotion is to be achieved because parents can help children and young people acquire competences teaching them how to preserve their own health.

Of similar importance is the development of social structures supporting health promoting behaviour. Particular attention should be paid to the living environment of children and young people in childrens' day-cares, schools and after-school day cares.

■ The GRC promotes good health care, especially for disadvantaged children, young people, young adults and families.





- The GRC pursues a close co-operation between the Aid to Children, Youth and Families , the education system and the partners of health promotion services.
- The GRC Aid to Children, Youth and Families strengthens the health promoting aspects of its services.
- The GRC Aid to Children, Youth and Families provides knowledge and competence enabling a health promoting relationship to both the self and others.



Acknowledging Diversity and Common Values

The course of life in our society is marked by growing individuality. The different ways of living among all age groups are more and more diverse. Different world views and systems of values meet in our society. Young people and their families should have opportunities to experience diversities, to think about them and draw their own conclusions. They have to be involved in the social discussions thus participating in the development of the rules for a life with other people and the common values among them, which will secure the sense of social solidarity.

- The GRC stands for inclusion, that is, for the right of everybody to belong to the society. It opposes actively and publicly both direct and structural discrimination and exclusion.
- The GRC endorses the idea that all social groups should be included in the decision making structures of our society.
- The GRC endorses the idea of implementing the right of children to participation. It furthers an overall participation of young people and gives them in its institutions and projects the occasion to direct themselves, to contribute ideas and knowledge and to take part in the decision making processes.
- Both the services and the facilities of the GRC Aid to Children, Youth and Families are tailored to promote appreciative discussions whereby personal opinions, ways of life and world views are valued as much as those of others.
- The GRC Aid to Children, Youth and Families supports openmindedness and intercultural competence by constantly exchanging experiences and ideas with immigrant organisations, religious institutions and partners in Europe and in other countries as well as within the network of the International Red

Cross and Red Crescent Movement.

Family Promotion, Strengthening and Support

Modern family life happens in diverse structures and is marked by different everyday challenges whereby most families surpass them on their own. However, there are also living conditions which families cannot handle on their own and which they need assistance for. Problems, such as child raising crises, economic difficulties, separation or divorce, physical or mental disabilities may be too overwhelming for a family. The Aid to Children, Youth and Families offers counsel, assistance and support to families in such periods or conditions of life.

- The GRC promotes the protection of marriage, partnership and family as well as the priority of child welfare.
- The GRC promotes more reliable and quality all-day education services for children and young people.
- The GRC promotes the idea of an adequately staffed and a sufficiently financed social infrastructure, which will support parents and protect children

from violence or negligence.

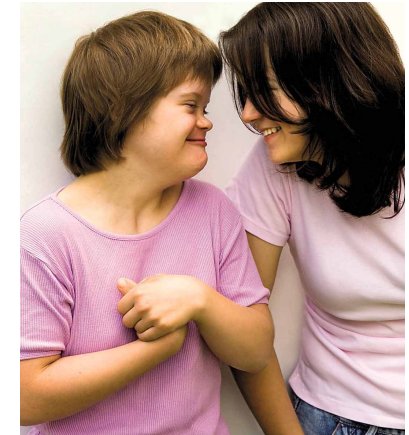
- The GRC promotes a better compatibility between family and work.
- The GRC Aid to Children, Youth and Families strengthens the ability of children, young people, young adults and families to live together in a constructive way, to take care of their household and to manage money in a responsible way.
- The GRC develops services further in order to assist families and provide them with aid to overcome daily hardships and manage crisis situations.

Prevention of Poverty and Exclusion – Promotion of Voluntary Engagement

Continuous poverty and social exclusion, often in more than one generation, cause resignation among many of the people affected by them. They retreat from the social and political life. The social gap between winners in the process of social development and people in precarious living conditions is becoming deeper and deeper. Such a development threatens the cohesion of the entire society.

Due to the demographic changes and the accompanying aging of our society the responsibility for the elderly has to be shouldered by fewer and fewer people. The demand for social work activities is growing and the resources of the social security systems provided by the state and the social insurances are limited. This situation will lead to the necessity of voluntary social activities on a larger scale.

- The GRC promotes appropriate economic living conditions and a good social and cultural infrastructure for children, young people, young adults and families. The costs of all the services and offers, especially those referring to child raising and edu-



cation, have to be designed in such a way that they are accessible for all citizens.

- The GRC Aid to Children, Youth and Families focuses its services strictly on the needs of people in disadvantageous living conditions, such as people with disabilities or a migration background endeavouring that these groups benefit from the services at least to the same extent as other population groups do.
- The GRC Aid to Children, Youth and Families is now increasingly offering visiting social workers. The GRC enables contact by phone and the Internet, especially in the area of family education and counselling, but also in the area of youth welfare services. In such a way, even those people who are less active or due to bad transportation or some handicap are restricted

in their mobility, will have better access.

- The Aid to Children, Youth and Families provides possibilities to people from both the same and from different age groups, with or without a family, with different education, social, ethnic or cultural backgrounds, with or without disabilities, to meet and to work together. It also encourages people to participate in the community by investing their own competences and talents.
- The GRC encourages various entities in the society to acknowledge voluntary engagement by presenting it, for instance, in school and work reports as well as when allocating social resources or when deploying public facilities.



The GRC stands for inclusion, that is, for the right of everybody to belong to the society and opposes actively and publicly direct and structural discrimination and exclusion.



Ensuring and Developing Quality in the Aid to Children, Youth and Families

Contemporary and future changes in the society will influence the needs for support among children, young people, young adults and parents. Therefore, a constant development of services and of the level of quality have to be ensured.

Since the demography is changing, the number of senior associates and employees is growing in the area of social welfare services. Considering the already visible and constantly growing lack of skilled professionals, particular emphasis has to be put on attracting skilled employees for the GRC.

- The GRC promotes the idea of educating sufficient numbers of skilled professionals for the Aid to Children, Youth and Families. The job profile and the financial conditions have to be as attractive as possible.
- The GRC promotes the idea of reliable and long-term perspectives for the organisations of aid to children, youth and families. This is a precondition ensuring the continuity and quality of their services.



- The GRC Aid to Children, Youth and Families will evaluate continuously within an effective quality management determining whether the implementation of available resources is both economical and transparent.
- The GRC Aid to Children, Youth and Families will ensure further development of its services in accordance with the needs of target groups and society.
- The GRC Aid to Children, Youth and Families will create a network of all its services and cooperate with other components within the GRC in order to provide appropriate services to all beneficiaries and to provide better access to these services.
- The GRC Aid to Children, Youth and Families will foster and maintain expertise by implementing current scientific knowledge and promoting further education.



The GRC promotes the idea of educating sufficient numbers of skilled professionals for the Aid to Children, Youth and Families component. The job profile and the financial conditions have to be as attractive as possible.

5

Outlook: With Joined Efforts into the Future

In order to meet the expectation of acting with joined efforts rather than within separate task areas in the years to come, the cooperation structures within the GRC Aid to Children, Youth and Families will be optimised. The connection to other task areas within social services, to the Red Cross Youth, to the GCR relief organisation and to external cooperation partners will have to be strengthened. These "joined efforts" are a stable foundation for a stable and long-lasting network within the GRC as well as for a needs-based further development of the GRC Aid to Children, Youth and Families.

By means of cooperation, which enables actors to complement and enrich each other, children, young people, young adults and families can be supported well-directed and in accordance with their cur-

rent needs. The qualified services and facilities of the GRC offer a solid professional basis to such promoting cooperation.



Imprint

Publisher

German Red Cross
National Headquarters
Team Aid to Children, Youth and
Families
Carstennstraße 58
12205 Berlin
Phone: 030 85 40 42 29
Fax: 030 85 40 44 68
drk@drk.de
www.DRK.de

Editorial Board

Janis Heinrich, DRK-Landesverband
Baden-Württemberg, Heribert Rollik,
DRK-Generalsekretariat, Dr. Sabine
Skutta, DRK-Generalsekretariat,
Annette Willesch, DRK-Landes-
verband Badisches Rotes Kreuz

Text editing and layout

communication agency ikonum
www.ikonum.com

Photographs

Front page: Mario Hocher, ikonum
Images page 8, 9, 11, 12, 15, 18
(bottom), 20, 21 (right), 22 (bottom):
Fotolia
Other images: DRK e.V.

Date of release

December 2011

© 2011 DRK e.V., Berlin

www.DRK.de

**German Red Cross
National Headquarters
Team Aid to Children, Youth and Families**

Carstennstraße 58
12205 Berlin

Phone: 030 85404229

Fax: 030 85404468

drk@drk.de

www.DRK.de

Promoted by the Federal Ministry of Family,
Seniors, Women and Youth and by GlücksSpirale



Bundesministerium
für Familie, Senioren, Frauen
und Jugend

